

## Quiz

**Note:** It is recommended that you save your response as you complete each question.

---

### Subsection

---

#### Question 1 (2.5 points)



Which of the following scanner resolution can be changed for a given scanner?

- ☐ Both of them
- ☐ Optical resolution
- ☐ Enhanced resolution
- ☐ None of them

Save

#### Question 2 (2.5 points)



Scanner resolution is reported in

- ☐ cpu
- ☐ dpi
- ☐ ppi
- ☐ cpi

Save

#### Question 3 (2.5 points)



The number of pixels in x direction that a flatbed scanner can produce is determined by

- ☐ the number of scan heads the scanner has
- ☐ the number of sensors the scan head has
- ☐ the size of the flat bed of the scanner
- ☐ the size of the scanned image

Save

#### Question 4 (2.5 points)



If you would like to have an image of 5" x 4" to be placed in your website with only 400 x 300 pixels, what scanning resolution should be used?

- ☐ 100 dpi
- ☐ 85 dpi
- ☐ 80 dpi
- ☐ 75 dpi
- ☐ 90 dpi

Save

### Question 5 (2.5 points)



your original picture is 5" x 4" and you want to scan the picture to print as 10" x 8" at 200 ppi, what scanning resolution should be used?

- ☐ 500 ppi
- ☐ 400 ppi
- ☐ 200 ppi
- ☐ 100 ppi
- ☐ 300 ppi

Save

### Question 6 (2.5 points)



Suppose that you scan a 2" x 1" picture in at a resolution of 400 dpi. What are the pixel dimensions of the scanned image? \_\_\_\_ pixels x \_\_\_\_ pixels

- ☐ 200 x 100
- ☐ 800 x 400
- ☐ 600 x 300
- ☐ 400 x 200
- ☐ 500 x 300

Save

### Question 7 (2.5 points)



Suppose that you scan a 2" x 1" picture in at a resolution of 400 dpi. What will the physical dimensions of the image be if you print it at 200 ppi? \_\_\_\_" x \_\_\_\_"

- ☐ 8" x 4"
- ☐ 2" x 1"
- ☐ 4" x 2"
- ☐ 4" x 1"
- ☐ 2" x 2"

Save

**Question 8 (2.5 points)**



How many megapixels are there in a picture of dimension 4000 x 2000?

- ☐ 8
- ☐ 6
- ☐ 2
- ☐ 4
- ☐ 10

Save

**Question 9 (2.5 points)**



Digital photo quality is determined by:

- ☐ the camera's image processing software
- ☐ all of the above
- ☐ the camera electronics
- ☐ the size and quality of the sensor
- ☐ the optics of the lens

Save

**Question 10 (2.5 points)**



Which of the following is true?

- ☐ Given the number of total pixels in an image one would know the aspect ratio (i.e., relative width and height) of the image
- ☐ A digital camera with more megapixels means better image quality
- ☐ None of the above
- ☐ A digital camera with a higher megapixel rating gives bigger prints?
- ☐ The size of the sensor and the number of light-sensing sites determine the maximum resolution of the digital camera.

Save

**Question 11 (2.5 points)**



Which of the following can capture digital images?

- ☐ All of the above
- ☐ Camera
- ☐ Cell phone
- ☐ None of the above
- ☐ Scanner

Save

### Question 12 (2.5 points)



Given here are the general steps of image retouching of a scanned image. Which step should be done at last?

- \_A\_ Remove color casts
- \_B\_ Adjust the overall contrast or tonal range of the image
- \_C\_ Crop and straighten the image
- \_D\_ Sharpen the image
- \_E\_ Repair small imperfections
- \_F\_ Fine-tune specific parts of the image

- ☐ F
- ☐ D
- ☐ E
- ☐ A
- ☐ B
- ☐ C

Save

### Question 13 (2.5 points)



Given here are the general steps of image retouching of a scanned image. Which one should be done in the second step?

- \_A\_ Remove color casts
- \_B\_ Adjust the overall contrast or tonal range of the image
- \_C\_ Crop and straighten the image
- \_D\_ Sharpen the image
- \_E\_ Repair small imperfections
- \_F\_ Fine-tune specific parts of the image

- ☐ E
- ☐ B
- ☐ A
- ☐ D
- ☐ C
- ☐ F

Save

**Question 14 (2.5 points)**



If your picture is out of perspective and you want to correct it, what tool you need to use?

- ☐ Sponge tool
- ☐ Healing Brush tool
- ☐ Burn tool
- ☐ Clone Stamp tool
- ☐ Straighten tool
- ☐ Dodge tool

Save

**Question 15 (2.5 points)**



If your picture has some small imperfection on it and you want to correct it, what tool you need to use?

- ☐ Dodge tool
- ☐ Sponge tool
- ☐ Clone Stamp tool
- ☐ Burn tool
- ☐ Straighten tool

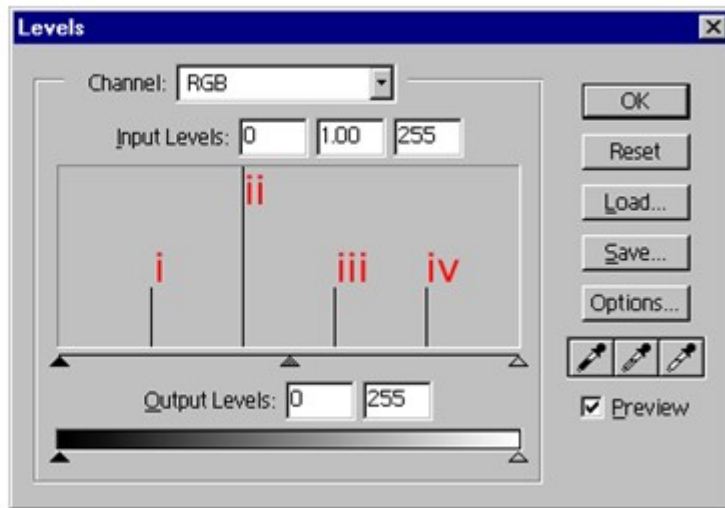
Save

**Question 16 (2.5 points)**





An image with 4 colors



In the above histogram, the bar (iii) represents which part of the image given in the left.

- ☐ B
- ☐ D
- ☐ C
- ☐ A

Save

### Question 17 (2.5 points)



When applying histograms to adjustment of brightness and contrast, what happens if one move the midtone slider to the left?

- ☐ The whole image is darker now
- ☐ the whole image could be brighter or darker now, depending on the original image.
- ☐ The whole image is the same
- ☐ The whole image is brighter now

Save

### Question 18 (2.5 points)



When applying histograms to adjustment of brightness and contrast, what happens if one move the highlight slider to the left?

- ☐ the whole image is darker now.
- ☐ the whole image is the same now.
- ☐ the whole image could be brighter or darker now, depending on the original image.
- ☐ the whole image is brighter now.

Save

### Question 19 (2.5 points)





What selection tool below would be best in order to select the sky in the above image so you can replace it with a more interesting sky image?

- ☐ Lasso tools
- ☐ Drawing outline of the sky
- ☐ Predefined shapes
- ☐ Magic Wand tool

Save

### Question 20 (2.5 points)



To make an 8" x 5" print with 100 ppi print resolution, what should the image dimension be?

- ☐ 400 x 200
- ☐ 800 x 500
- ☐ 800 x 400
- ☐ 600 x 200
- ☐ 600 x 300

Save

### Question 21 (2.5 points)



For an image of 1600 x 800 pixels, when printed with print resolution 200ppi, how big is the resulted print?

- ☐ 16" x 8"
- ☐ 5" x 4"
- ☐ 8" x 4"
- ☐ 11" x 7"
- ☐ 10" x 8"

Save

**Question 22 (2.5 points)**



Suppose the print resolution is 300 ppi, for a print of 10" x 8", what is the digital image dimension?

- ☐ 4000 x 3000
- ☐ 3000 x 2500
- ☐ 3000 x 2400
- ☐ 3000 x 2000

Save

**Question 23 (2.5 points)**



Which of the following is not correct?

- ☐ Both the pixel dimensions of an image and the print resolution (ppi) affect the image's print size.
- ☐ Given a fixed pixel dimension, you get a smaller print when a higher print ppi is chosen.
- ☐ Given a fixed print size, you need larger pixel dimensions when a higher print ppi is chosen.
- ☐ Given a fixed print ppi, you need larger pixel dimensions when a smaller print size is chosen.

Save

**Question 24 (2.5 points)**



Resampling an image is often referred to as \_\_\_\_\_.

- ☐ translating
- ☐ repositioning
- ☐ scaling
- ☐ rotating

Save

**Question 25 (2.5 points)**



Which of the following is true?

- ☐ Print resolution have an impact on the image quality when printed.
- ☐ Print resolution and printer resolution are the same.
- ☐ Resampling an image will have negative impact on the image quality.
- ☐ When a digital image is printed, each image pixel is represented by one printer ink dot.

Save



**Question 26 (2.5 points)**

Which of the following image formats is not good for web applications?

- ☐ BMP
- ☐ JPEG
- ☐ GIF
- ☐ PNG

Save

**Question 27 (2.5 points)**

Which of the following file formats supports transparency?

- ☐ All of the above
- ☐ None of the above
- ☐ JPEG
- ☐ GIF
- ☐ BMP

Save

**Question 28 (2.5 points)**

What causes the artifacts when save a TIF image to GIF format?

- ☐ Lossless compression
- ☐ Lossy compression
- ☐ Color reduction
- ☐ Dithering

Save

**Question 29 (2.5 points)**

In order to alleviate the artifacts when save a TIF image to GIF, which of the following technique can be applied?

- ☐ Compression
- ☐ Dithering
- ☐ Color reduction
- ☐ Sharpening

Save

**Question 30 (2.5 points)**

Which of the following cannot apply to corner points in a vector graphics?

- ☐ used for creating straight segments
- ☐ handles have zero length
- ☐ None of the above
- ☐ appear sharp and angular
- ☐ have direction handles to let you adjust the tangent and curviness at the point

Save

**Question 31 (2.5 points)**

Which of the following is not correct?

- ☐ The handle's length controls the curviness of a curve at a anchor point
- ☐ When you use the free-form drawing tool to draw a path, it is not made up of anchor points any more
- ☐ The Selection tool let you select a whole object in vector graphics.
- ☐ A path does not have physical appearance until it is stroked.
- ☐ The Subselection tool let you select the points and handles on a path.

Save

**Question 32 (2.5 points)**

Which of the following support animation?

- ☐ PNG images
- ☐ GIF images
- ☐ JPEG images
- ☐ BMP images

Save

**Question 33 (2.5 points)**

Which of the following is correct?

- ☐ When you use the free-form drawing tool to draw a path, it is not made up of anchor points any more.
- ☐ In vector graphics, the handle's angle controls the curviness at a point
- ☐ In vector graphics, the handle's length controls the curviness at a point
- ☐ A path in vector graphics, even without be stroked, can have physical appearance at your final image.

Save

**Question 34 (2.5 points)**

Which of the following is NOT a preset shape drawing tool in Inkscape?

- ☐ Polygons
- ☐ None of them
- ☐ Stars
- ☐ Ellipses
- ☐ Spirals

Save

**Question 35 (2.5 points)**

Which of the following is wrong?

- ☐ Corner points have direction handles to let you adjust the tangent and curviness at the point
- ☐ A path does not have a physical appearance--line width or color--until the path is stroked with a specified line style, width, and color
- ☐ None of them
- ☐ Vector graphics is not pixel based
- ☐ Fill can be applied to open and closed paths

Save

**Question 36 (2.5 points)**

Which of the following is correct?

- ☐ Scaling an image usually deteriorates the image quality somewhat.
- ☐ When PPI is increased, the quality of the print will be better
- ☐ If an image has more pixels, when it is printed on paper, it has bigger size
- ☐ Print Resolution PPI is the same thing as Printer Resolution DPI

Save

**Question 37 (2.5 points)**

Which of the following is wrong about sharpening an image?

- ☐ Even if your image is a straight digital photograph from a digital camera, it is a good idea to experiment with sharpening to see if it improves the image's overall clarity. That is why sharpening is necessary.
- ☐ The more you sharpen an image, the better the quality of the image will be. That is why sharpening is necessary.
- ☐ Scaling an image also can make the image soft-focused; that is why sharpening is necessary.
- ☐ Scanned images usually look a little soft-focused; that is why sharpening is necessary.

Save

**Question 38 (2.5 points)**

The number of \_\_\_\_\_ in your digital camera determines the resolution of the picture taken by this camera?

- ☐ sensors
- ☐ electronics
- ☐ pixels
- ☐ lens

Save

**Question 39 (2.5 points)**

Which of the following is correct?

- ☐ To get a fixed print size, you need larger pixel dimensions and a lower print ppi.
- ☐ Printer's DPI determines the quality of your printing
- ☐ The print size of an image only depends on the number of pixels it has
- ☐ PPI used for an image determines the quality of your printing

Save

**Question 40 (2.5 points)**

Which of the following is not a selection tool in image retouching?

- ☐ Drop shadow tool
- ☐ Rectangular Marquee Tool
- ☐ Magnetic lasso tool
- ☐ Pen tool for drawing an outline
- ☐ Magic wand tool

Save

Save All Responses

Go to Submit Quiz